



Brother Refill Kit Instructions

#6000RK

Specific Cartridge Series

LC-61, LC-65, LC-71, LC-75, LC-101, LC-103, LC-105, LC-107, LC-109



5869 Terminal Ave. | Colorado Springs, CO 80915
PH: 719-578-0506 | www.rjettek.com

IS-6000RK-V2.4

Contents of Kit:

- (4) Syringes, 30cc, #1951
- (1) Syringe, 60cc, #1952
- (4) Syringes, 20cc, #1953
- (4) Syringe Tips, Clear, #1955
- (4) Syringe Tips, #1959
- **Inks:** 4 ounces of Black, 2 ounces Cyan, 2 ounces Magenta, and 2 ounces Yellow

Cartridge #	Color	Ink #
61.65.71.75.79.101.103.107,109	Black	BKP45
61.65.71.75.79.101.103.105	Cyan	C305
61.65.71.75.79.101.103.105	Magenta	M305
61.65.71.75.79.101.103.105	Yellow	Y305

Approximate Weights and Fill Volumes

Cartridge #	Size	Color	Empty Wt	Ink (ml)	Full Wt	Cartridge #	Size	Color	Empty Wt	Ink (ml)	Full Wt
LC-61BK	Regular	Black	35	12	47	LC-101C	Regular	Black	32	8	40
LC-61C	Regular	Cyan	30	4	34	LC-101C	Regular	Cyan	27	4	31
LC-61M	Regular	Magenta	30	4	34	LC-101M	Regular	Magenta	27	4	31
LC-61Y	Regular	Yellow	30	4	34	LC-101Y	Regular	Yellow	27	4	31
LC-65BK	HY	Black	40	20	60	LC-103BK	Starter	Black	31	14	45
LC-65C	HY	Cyan	29	10	39	LC-103C	Starter	Cyan	26	10	36
LC-65M	HY	Magenta	29	10	39	LC-103M	Starter	Magenta	26	10	36
LC-65Y	HY	Yellow	29	10	39	LC-103Y	Starter	Yellow	26	10	36
LC-71BK	Regular	Black	35	7	42	LC-103BK	XL	Black	31	13	44
LC-71C	Regular	Cyan	29	4	33	LC-103C	XL	Cyan	27	6	33
LC-71M	Regular	Magenta	29	4	33	LC-103M	XL	Magenta	27	6	33
LC-71Y	Regular	Yellow	29	4	33	LC-103Y	XL	Yellow	27	6	33
LC-75BK	XL	Black	37	12	49	LC-107BK	XXL	Black	35	26	61
LC-75C	XL	Cyan	29	8	37	LC-105C	XXL	Cyan	26	12	38
LC-75M	XL	Magenta	29	8	37	LC-105M	XXL	Magenta	26	12	38
LC-75Y	XL	Yellow	29	8	37	LC-105Y	XXL	Yellow	26	12	38
LC-79BK	XXL	Black	61	54	115	LC-109BK	XXL	Black	50	53	103
LC-79C	XXL	Cyan	31	14	45						
LC-79M	XXL	Magenta	31	14	45						
LC-79Y	XXL	Yellow	31	14	45						

Caution: The LC-103 “Starter” cartridges hold more ink than the LC-103XL cartridges. **DO NOT** try and fill the LC-103XL cartridges with the same amount of ink as the “Starters”, they will not hold this amount. **DO NOT** exceed fill amounts for any cartridge.

Important: The LC-103 “Starter” cartridges will only work in same series of printers that originally came with the LC-103 Starters. They **WILL NOT WORK** in the series of printers that originally came with the LC-101 cartridges, but these printers will use the regular LC-103 cartridges.

Cartridge Parts and Function

Brother LC-61, LC-65, LC-71, LC-75, LC-79, LC-101, LC-103, LC-105, LC-107, and LC-109 Series

All of the Brother cartridges listed above have the same basic parts: The Exit Port, the Vent Port, and the Valve Actuator.
See Figure 1.

Exit Port – This releases ink from the cartridge to the printer/print head.

Vent Port – As ink flows out of the cartridge the vent port allows air into the cartridge. This port is also used to refill the cartridge. So, it can also be called the **Fill Port**.

Valve Actuator – This opens the valve that vents the cartridge. Installing the cartridge into the printer pushes the actuator in, which opens the valve. The valve closes when the cartridge is removed. During filling this actuator is depressed, which allows the ink from the syringe to flow into the cartridge.

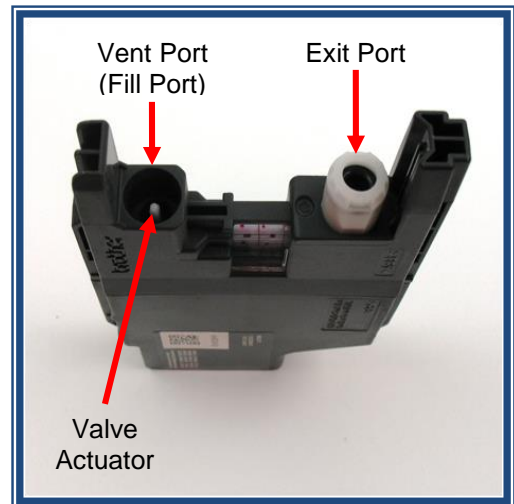


Figure 1

Cartridges with Chips

The LC-101/103/105/107/109 Series have a chip on the cartridge. **Warning:** Special care must be taken when handling these cartridges. DO NOT touch the circuit or contact pads unless properly grounded. To prevent damage to the chip follow common ESD safety procedures – for example see: en.wikipedia.org/wiki/Electrostatic_discharge

Refill Process

The refilling process works by removing air, creating negative pressure (or vacuum) inside the cartridge. The ink is then pulled into the cartridge by this negative pressure.

1. Attach the Syringe Tip (#1959) to the 30ml syringe. Insert this tip into the Exit Port of the cartridge.
2. Position the cartridge so that the Exit Port is at the bottom, and then pull back on the plunger to remove any extra ink remaining in the cartridge. See Figure 2.
3. Place the cartridge, with the ports facing up, onto a solid surface.
4. Using the same syringe and syringe tip in Step 1, insert this tip into the Exit Port again. Pull back on the plunger and remove the syringe tip in one motion. This must be repeated 3 times, or until the plunger is difficult to pull back on. See Figure 3.
Note: This will remove air from inside the cartridge, and create the negative pressure needed to fill the cartridge.
5. Attach the Clear Syringe Tip (#1955) to the 20ml syringe.



Figure 2

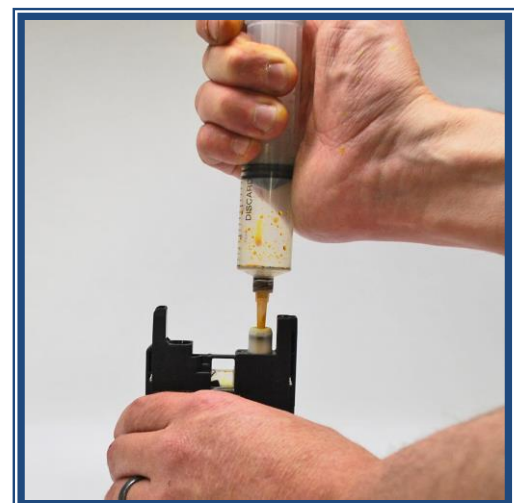


Figure 3

6. Select the color ink for the cartridge you are going to fill, and draw the designated amount of ink for the cartridge into the syringe. [See page 2 \(Ink and Weight Tables\)](#).
7. Insert the Clear Syringe Tip into the Vent Port making sure that Valve Actuator slips inside the syringe tip (see Figure 4). **Caution:** Make sure that you do not press the Valve Actuator while inserting. If this happens the pressure will be released, and you will have to start over at Step 1.
8. Press down while holding the syringe at a slight angle. The ink will now flow into the cartridge.
9. If all the ink does not enter the cartridge then create more vacuum in the cartridge by repeating Step 4, but this time hold the cartridge at a 45° angle. [See Figure 5](#). Then repeat Steps 7 and 8.



Figure 4

Extra Large Cartridges

Cartridges like the LC-79XXL and the LC-109XXL have about 54 ml of ink, and so you will need to alternate during filling between the syringe to pull vacuum (exit port) and the syringe to fill (vent/fill port) until all the ink in the syringe is in the cartridge. The reason for this is because there will not be sufficient vacuum created within the cartridge with one application of the vacuum syringe to pull all of the ink into the cartridge at one time. You can also use the BroLuer, #JE1079, which can accomplish the vacuum and filling using one side of the cartridge.

Note: If you fill large quantities of these cartridges you may want to purchase a BroLuer anyway. The BroLuer can make the vacuum/filling action easier. Contact your Sales Rep for more information, or visit our website at www.rjettek.com.



Figure 5

Chip Resetter

The newer LC-101/103/105/107/109 series cartridges have a chip, which primary purpose is to provide ink levels. We recommend the purchase of the Brother Chip resetter, which will reset the LC-103/105/107 chips so that the ink levels will be available on the printer. This is available from R-JetTek (p/n: 3405). Go to www.rjettek.com for pricing and availability, also [see Figure 6](#).

Note: The LC-101 and LC-109 chips are not currently covered by this model of the Brother Chip Resetter.

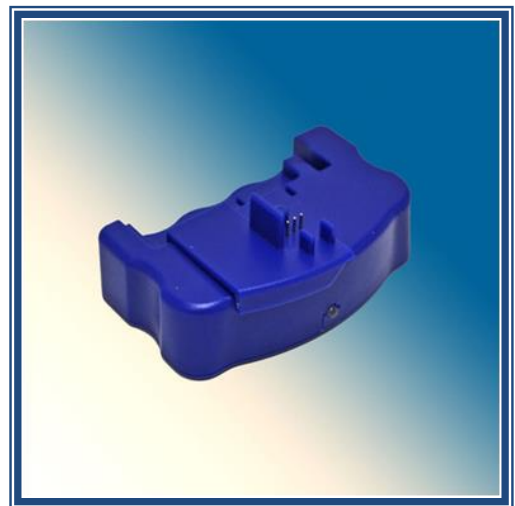


Figure 6